



SHETLAND HAMEFARIN 2010

INSIDE THIS ISSUE:

Concert Line-ups	2
Power Of Place	3
Shetland News	3
Events Schedule	4

Official Hamefarin Members

As of 31 March 2010, 418 Hamefarers have registered as Official Members. If you are 'coming home' remember to register at shetlandhamefarin.com/registration

Travel News

Hamefarers are strongly advised to book their travel to Shetland as soon as possible, in particular if they intend to travel by boat.

NorthLink Ferries are currently holding a number of berths specifically for Hamefarers, however these berths are due to be released for public sale on 12 April.

We would therefore encourage Hamefarers who intend to travel by boat to book their travel by this date to avoid disappointment.

Hamefarers will of course still be able to qualify for the 30% Islander Discount after 12 April but availability will be on a first-come first-serve basis.

Remember to quote reference N10VST-01 to qualify for the discount.



Passengers on last year's Simmer Dim cruise enjoy a glorious view of the Ramna Stacks from the deck of the *Daggri*

SHETLAND NATURE CRUISES

While much of the Hamefarin fortnight will be spent at concerts, viewing exhibitions, listening to the Museum and Archives fascinating programme of lectures or touring the various heritage centres and museums throughout Shetland, Hamefarers will have plenty of opportunity to sample the natural delights of Shetland.

One of the best ways to view Shetland's stunning wildlife and scenery is from the sea. A number of companies in Shetland run cruise trips through the summer months, and one of these companies likes to offer something a bit different.

Shetland Nature Cruises, run by local man Brydon Thomason, is delighted to announce the third 'Mid Simmers Dim Cruise' to coincide with the Hamefarin fortnight.

The cruise, which this

year will take place on **Sunday 20 June**, is aboard the *Daggri*, one of the 'super-ferries' which operates on the ferry route linking the Shetland mainland to the island of Yell.

At over 65m in length, and capable of carrying 144 passengers, the *Daggri*, and her sister ship the *Dagalien*, are by far the largest of the vehicle ferries which serve the outlying islands of Shetland.

With plenty of viewing space up on deck, a trip on the *Daggri* is the perfect way to view the Shetland coastline, and see some of the many species of bird and sealife which are abundant in Shetland during the summer.

Of this year's trip, Brydon said "Last year's highly innovative Mid Simmers Dim Cruise gave passengers the unique experience of enjoying some of Shetland's most iconic land- and seascapes from a totally new perspective and on the longest night of

the year.

"This summer we will follow the same route, cruising north-west out of Yell Sound, past Fethaland and the Ramna Stacks and on down past the Lang Ayre behind Rona's Hill, Eshaness and round into St. Magnus Bay overlooking the Drongs."

Shetland Nature Cruises will have expert guides on hand to offer narration on marine wildlife, geology, history and archaeology, and will be constantly searching for exciting wildlife viewing opportunities throughout the cruise.

This summer's cruise will depart 0930 from Ulsta (Yell) and 0950 from Toft (Mainland) on Sunday 20 June. Ticket prices are £40 (£35 conc.) and are on sale from Islesburgh Community Centre from 1 May 2010.

For more information visit www.shetlandnature.net



**SHETLAND
HAMEFARIN 2010**

MONDAY 14 JUNE

TO

**SATURDAY 26
JUNE**

2010

CONCERT LINE-UPS ANNOUNCED

The Shetland Hamefarin 2010 Committee are delighted to announce the line-ups for the three main musical events that will take place over the course of the Hamefarin fortnight.

First up on Wednesday 15 June is the **Tammy Anderson Tribute Concert**, organised by the Shetland Folk Festival Society to celebrate the life and music of Dr Tom Anderson MBE and to commemorate the centenary of his birth. The concert will unite musicians from Shetland and Norway, all of whom have a direct connection with this legendary musician, composer and traditionalist.

The world-class line-up features former student Aly Bain, often regarded as Scotland's supreme fiddler, along with his world famous side-kick Phil Cunningham on accordion. As always, having Aly and Phil in the line-up will guarantee an entertaining evening.

Also travelling home will be one of "Tammy's Peerie Angels", Catriona Macdonald who was a founding member of Shetland's Young Heritage in 1981. A star pupil of Tammy's, Catriona's superb playing and great charisma have established her a worldwide reputation. She has already performed with groups such as Blazin Fiddlers and the String Sisters, an outfit uniting six of the most exciting female fiddle players in the world.

One of these sisters is Annbjørg Lien from Norway, also appearing. Touring as a top performer of World Music as well as Norwegian folk music for over 25 years, Annbjørg studied Hardanger fiddle with Hauk Buen of Telemark, a close friend of Tom's who performed at the very first Shetland Folk Festival in 1981. The Buen family name is extremely important in the Norwegian traditional music scene and it is an honour that the family will be represented at the concert by Per Anders Buen Garnås, nephew of Knut and



Traditional music favourites Aly Bain (left) and Phil Cunningham, confirmed for the Tammy Anderson Tribute Concert

Hauk, and one of the finest young Hardanger fiddle players in Norway today.

No Tammy Anderson Tribute would be complete without performances by the two fiddle groups founded by Dr Anderson, both of which are still going strong today – Shetland's Heritage Fiddlers and the Shetland Fiddlers Society.

Hamefarers will get the chance to polish up on their Shetland dancing at the **Hamefarin Dance** on Friday 25 June, organised by Shetland Accordion and Fiddle Society. The Alan Nicolson Dance Band and Cullivoe Dance Band, featuring some of Shetland premier dance musicians, will treat Hamefarers to a night of reels, jigs and much more, and will have to crowd dancing long into the night.

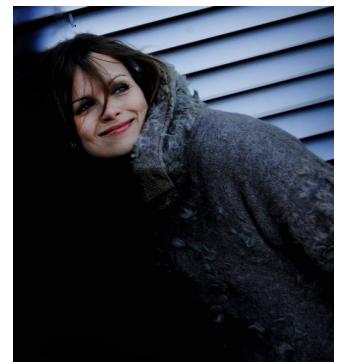
Also being organised by the Folk Festival's capable hands is the **Final Fling** which will showcase some of Shetland's finest musical talent, and will be a wonderful way to close out the Hamefarin festivities on Saturday 26 June.

Headlining the Fling will be Fiddlers' Bid, leading exponents of Shetland's unique musical heritage and

rich fiddle tradition, and on a high after their award-laden album, *All Dressed In Yellow*. Also confirmed to perform are firm favourites with audiences, Hom Bru, who have been playing their infectious blend of Shetland music since 1978.

Audiences will also be warmed to the terrific voice of Sheila Henderson whose band was described by none other than Albert Lee as "world class".

Tickets for all of the above events can be purchased by calling +44 (0) 0800 477 1000 (open 24 hours) or at www.shetlandhamefarin.com/tickets.



**Norwegian fiddler
Annbjørg Lien**

POWER OF PLACE

Among all the events and activities planned for 2010, many to coincide with the Hamefarin, one of the most fascinating is **Power of Place**, Shetland's first celebration of architecture and place.

The project aims to bring greater community engagement with architecture and enable empowerment in decision making around the local built environment and public spaces.

Clair Aldington of organisers Shetland Arts Development Agency, said 'Placemaking is an architectural concept which is about promoting health and well-being and ensuring that communities can play an active role in the decisions made about their built environment and public spaces. Power of Place has placemaking at the core of all its activities.'

PoP will deliver a programme during 2010 of arts, educational and community workshops for all ages, themed articles in the media, an international architectural conference ('Building Resilience in Island Communities' on 17-18 September 2010), open forums for debate and discussion, a youth street event, a film festival (Bricks in Flicks) and events in rural community buildings across the islands.

The project will also establish a sustainable



Power of Place
Shetland's Year of Architecture and Place 2010

network that will continue beyond the end of 2010 to champion good architecture and the built environment in Shetland. This network will include community members, built environment professionals, local and public bodies.

The organisers believe that architecture has traditionally been perceived as something removed from the public. PoP aims to challenge this through building skills, knowledge and understanding of the role placemaking can have in decisions about public spaces and the built environment.

The programme of events has been developed using an experimental and 'grassroots' model which began with a 'Think and Do Tank' public consultation day in October 2007. As a result, there is now a keen demand for the project from diverse sectors of the community as well as a strong sense of community ownership of the project.

The PoP events that will

coincide with the Hamefarin programme include 'Portage: Crossing Points'. This is an exhibition at Shetland Arts' Bonhoga Gallery, Weisdale, of artwork containing interactive technology. Themes include Shetland's Diaspora and the lives of fishing families. The work stems out of artists' residencies in Shetland during 2009 and is the first exhibition of its kind in the UK.

Also at this time will be a Shetland architects open-doors day, where local architects, designers and artists will open their homes and studios to members of the public.

Another fun way to take part and have a say in Power of Place is via the PoP Phone. PoP is asking people to tell them what Power of Place means to people. Does it mean people, places, words, memories? Anyone can take part by sending texts, photos and short mobile phone videos. These will be brought together and shown around Shetland at the end of 2010. The PoP Phone number is 0750 35 966 35 (texts will be charged at your standard network rate).

For more information, including news, schedule of events and contact details, visit the Power of Place website—powerofplace.co.uk or follow Power of Place on Twitter.



**SHETLAND
HAMEFARIN 2010**

MONDAY 14 JUNE

TO

SATURDAY 26

JUNE

2010

MEANWHILE IN SHETLAND...

David Smith from Maywick, Bigton made history earlier this month when he lead the procession as Guizer Jarl in the first ever **South Mainland Up Helly Aa**.

The Jarl lead the procession through Bigton, and the burning of the galley took place on the St. Ninian's Isles beach. Later, revellers were entertained by 23 guizer squads at the Bigton, Gulberwick and Cunningsburgh Halls, the Sandwick Social Club, and the Ness Boating Club.

Up Helly Aa celebrations are

now at an end for another year. Cullivoe and Bressay held their festivities on Friday 26 February, and the festival in Norwick, Unst took place on Saturday 27 February. Shortly after the South Mainland, the Up Helly Aa season closed in Brae, on Friday 19 March.

Simon King's Shetland Diaries on BBC2 have proved to be a hit with the viewing public. A chronicle of nature (and weather) in Shetland, the three episodes followed Mr King, and his wife and young daughter, as they filmed Shetland and the abundant

wildlife over the course of a year. The series captured killer whales, otters, gannets, phalaropes and seals, as well as almost 3 million viewers.

Shetland band **Fiddlers' Bid** won best instrumental album at this year's Spiral Earth awards, after months of public voting on the folk music promotion company's website.

The award, won for their album *All Dressed in Yellow*, comes after their best album win at the Scottish Traditional Music Awards in November 2009.

March 2010 Newsletter
Produced by the Shetland Hamefarin 2010
Committee

Shetland Islands Council
Economic Development Unit
Solarhus
3 North Ness Business Park
Lerwick
Shetland ZE1 0LZ
SCOTLAND
UNITED KINGDOM

Tel: +44 (0) 1595 744 902
Fax: +44 (0) 1595 744 961
E: thomas.coutts@shetland.gov.uk



Useful Contacts

Islesburgh Community Centre
King Harald Street, Lerwick
Shetland ZE1 0EQ
Tel: +44 (0) 1595 745100
Fax: +44 (0) 1595 745144
E: reception.islesburgh@shetland.gov.uk
W: www.islesburgh.org.uk

John Leask & Son
The Esplanade, Lerwick
Shetland ZE1 0LL
Tel: +44 (0) 1595 693162
Fax: +44 (0) 1595 693171
E: info@leaskstravel.co.uk
W: www.leaskstravel.co.uk

Promote Shetland
Hay's Dock, Lerwick
Shetland ZE1 0WP
Tel: +44 (0) 1595 741573
E: info@shetland.org
W: www.shetland.org

Shetland Family History Society
6 Hillhead, Lerwick
Shetland ZE1 0EJ
E: secretary@shetland-fhs.org.uk
W: www.shetland-fhs.org.uk

Shetland Museum and Archives
Hay's Dock, Lerwick
Shetland ZE1 0WP
Tel: +44 (0) 1595 695057
Fax: +44 (0) 1595 696729
W: www.shetland-museum.org.uk

VisitShetland
Market Cross, Lerwick
Shetland ZE1 0LU
Tel: +44 (0) 8701 999 440
Fax: +44 (0) 1595 695 807
E: info@visitshetland.com

SCHEDULE OF EVENTS

The schedule of events is continually building and we will add events to the website as they are confirmed.

In addition to the daily events, the **Hamefarin Club** will run throughout the Hamefarin in Islesburgh Community Centre where there will be a programme of talks, workshops and much more. Details of what's planned will be announced in the next newsletter.

Monday 14 June

Hamefarers' Welcome
Reception—Clickimin Leisure
Complex

A Kist of Emigrants book
launch—Shetland Museum and
Archives

Guided Walk—Mousa RSPB
Reserve

Tuesday 15 June

Local Area Coach Trip—North
Isles (Fetlar, Unst and Yell)

Introduction to the Archives—
Shetland Museum and
Archives

Shetland Dialect Evening with
Poetry and Readings—Shetland
Library

Wednesday 16 June

Local Area Coach Trip—West
Mainland

Local Area Coach Trip—Papa
Stour

Shetland farming a century
ago—Shetland Museum and
Archives

Quilting with Friends—
Hamefarin Club

Pre-School Shetland Story
Time—Shetland Library

Textile Treasures—Shetland
Museum and Archives

Tammy Anderson Tribute
Concert—Clickimin Leisure
Complex

Thursday 17 June

Local Area Coach Trip—North
Mainland

Date with Nature—RSPB
Sumburgh Head



Fiddlers' Bid—set to perform at the Final Fling

South of the Border—19th
century migration to England
and Wales—Shetland Museum
and Archives

Thursday 17-Sunday 20 June

Flavour of Shetland—Victoria
Pier, Lerwick

Thursday 17-Monday 21 June

Lerwick Methodist Church
Exhibition

Thursday 17-Sunday 20 and Thursday 24-Saturday 26 June

Date with Nature—RSPB
Sumburgh Head

Friday 18th June

Local Area Coach Trip—
Whalsay

Shetland Lace: then and now—
Shetland Museum and
Archives

Saturday 19 June

Day and Evening sailings trips
on the Swan LK243—Mid Yell

Midsummer Carnival—Lerwick

Shetland Field Studies Group—
Guided Walk, Bressay

Sunday 20 June

Shetland Field Studies Group—
Guided Walk, Weisdale

Day sailing trips on the Swan
LK243—Mid Yell

Lerwick Methodist Church—
Songs of Praise

Monday 21 June

Introduction to the Archives—
Shetland Museum and
Archives

Guided Walk—Mousa RSPB
Reserve

Quilter's Show and Tell—
Hamefarin Club

Simmer Dim Midnight Cruise
on the Swan LK243—Sellaness

to Scalloway

Tuesday 22 June

Local Area Coach Trip—South
Mainland

Simmer Dim Evening Sail on
the Swan LK243—Scalloway

Wednesday 23 June

Local Area Coach Trip—Vidlin
and Nesting

Quilting with Friends—
Hamefarin Club

An afternoon of Shetland
Literature—Shetland
Museum and Archives

Pre-School Shetland Story
Time—Shetland Library

Simmer Dim Evening Sail on
the Swan LK243—Scalloway

Shetland Youth Jazz
Concert—Lerwick Town Hall

Thursday 24 June

Local Area Coach Trip—
Trondra, Burra and Scalloway

Local Area Coach Trip—
Tingwall, Whiteness and
Weisdale

Open Evening—Lerwick
Boating Club

Friday 25 June

The Brochs of Shetland—
Shetland Museum and
Archives

Hamefarin Dance—Clickimin
Leisure Complex

Saturday 26 June

Final Fling—Clickimin Leisure
Complex.

Viking Parade—Clickimin

Daily Events

Introductory Tour—Shetland
Library (excluding 20 June)